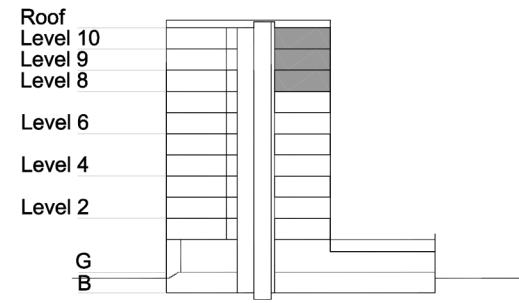


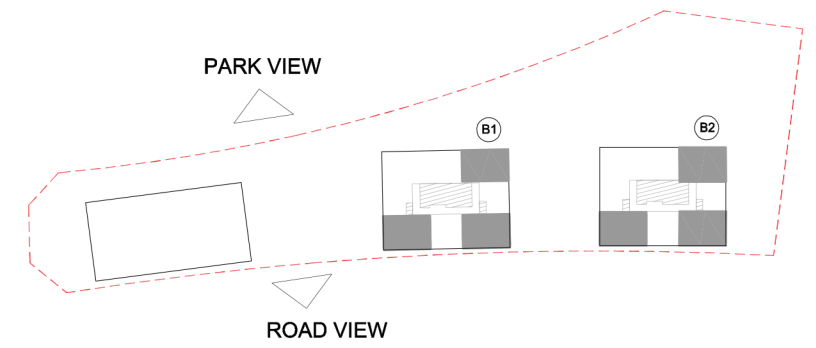
TYPE 1 - STANDARD BUILDING TWO BEDROOM APARTMENT Variation 1

Net Area = 102.4 sq.m (1102.5 sq.ft)
Balcony Area = 6.0 sq.m (64.2 sq.ft)
Total Area = 108.4 sq.m (1166.7 sq.ft)

OCCURS IN TYPICAL FLOOR PLAN AV2 & B



KEY SECTION - B1/B2



KEY PLAN

